

neopost 



AS-950C DIGITAL COLOR PRINTER

Innovative technology delivers lowest cost per piece



WE VALUE YOUR MAIL



neopost

AS-950C

DIGITAL COLOR PRINTER

The AS-950C printer from Neopost leverages patented Memjet® technology to dramatically improve direct mail and transpromotional marketing – at an extremely low total cost of ownership. It allows mail centers, print shops and marketers of all sizes to take advantage of exceptional color printing fidelity and printing speed across a wider variety of paper and label stocks than ever before. Combined with the optional mColor RIP & Workflow Software, the AS-950C delivers professional level color quality control.

The AS-950C is ideally suited for applications such as envelopes and stationery; wedding, birthday, holiday card and special event invitation printing; mailing addressing and barcoding and more. The print head is the key. The AS-950C utilizes a single 8.77" bar that spans the width of the printing surface. Unlike conventional printers that must traverse back and forth across the page, this system has a fixed head that prints as the media continuously moves along at speeds up to eight times faster. Capable of printing 12 inches per second at 1600 x 800 dpi resolution. The AS-950C offers print speeds of up to 7,500 No. 10 envelopes per hour – compared to toner-based printers (e.g., LED and laser printers) that are often limited to 3,000 pieces per hour at 1200 dpi.

Exceptional print quality plus speed translate into your lowest cost per piece and fastest ROI for direct mail and transpromotional marketing printing.

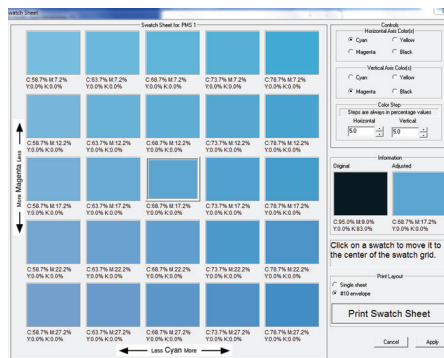


PRINT LIKE A PROFESSIONAL AND INCREASE PRODUCTIVITY

Neopost's optional mColor RIP & Workflow Software incorporates color management tools, production job presets, hot folders and the powerful Harlequin RIP engine into one workflow product. mColor delivers predictable and repeatable standardization of color and improves overall image quality. With its easy-to-use job workflow interface, mColor provides the tools to automate production, manage jobs and deliver professional color quality control to both businesses and commercial printers.

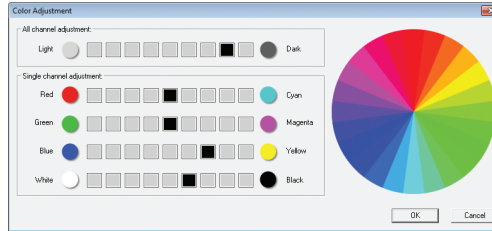
ADVANCED COLOR MANAGEMENT AND SPOT MATCHING

The mColor RIP provides the tools to edit spot color without being an Adobe® Photoshop or color expert. Adapt spot color to match existing color specifications painlessly. mColor identifies colors in your image automatically. From there, the user can print out color swatches on their material for comparison, adjust the colors, save the changes per job or globally, then go to print.



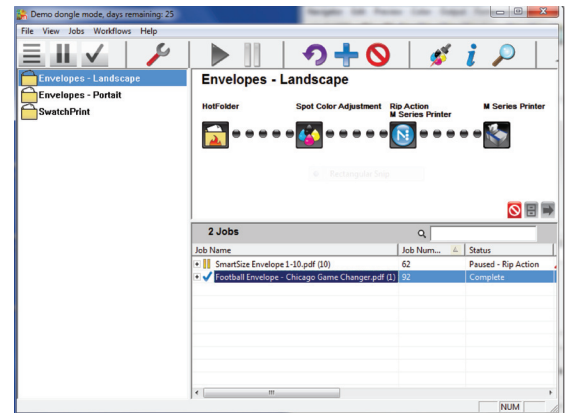
HARLEQUIN® RIP TECHNOLOGY

For commercial printing you need robust and reliable RIP software that gives high performance, quality and efficiency. That's why we built mColor around the state-of-the-art Harlequin® RIP – the expert printer's choice. mColor's integrated Harlequin® RIP provides the performance and productivity to maximize output quality from the AS-950C.



WORKFLOW PRODUCTIVITY

Submit, manage and preview jobs anywhere on the network from a Mac® or PC. Store and save print files and configurations for future use, making repeat jobs quick and easy.



ICC PROFILES

Built in ICC color profiles ensure the best possible output on a wide variety of papers including commodity grade envelopes, standard office paper, inkjet gloss and matte finish paper and inkjet envelopes. The examples shown reflect the difference of one file printed on the same grade envelope, using the Windows® driver versus the mColor software.



Windows® driver



mColor software

AS-950C

DIGITAL COLOR PRINTER

SPECIFICATIONS

MACHINE SPECIFICATIONS

Length x Width x Height 24" x 20" x 18"
Weight 90 lbs.

PRINT QUALITY AND PAPER SPECIFICATIONS

Print resolution Up to 1600 x 1600 dpi
Print speed Up to 3,600 pages/hr.
Up to 7,500 No. 10 envelopes/hr.
Up to 8.5" x 17" with full bleed capability
Print area Up to 1/48"
Material size min (L x W) 4 1/4" x 3"
Material size max (L x W) 17" x 9.5"
Material thickness Up to 1/48"
(0.5mm/430gsm/160# cover/240# index)
Ink capacity 250ml – Cyan, Yellow, Magenta
500ml – Black
Color matrix Up to 16.8 million colors

OPERATION EFFICIENCY

- Memjet® technology
- High capacity ink tanks
- Fixed head design
- Automatic print head cleaning and capping station
- Built-in top load feeder
- Pressure roller transport system with star rollers
- TrueType® or PostScript® system fonts

PC INTERFACE AND REQUIREMENTS

- Electronic firmware update downloads via PC connection
- USB and ethernet PC interface
- 110VAC 60Hz / 2A

OPTIONS

- Conveyor stackers
- IR dryers
- Satori Bulk Mailer software
- mColor RIP & Workflow software

mColor COMPUTER SPECIFICATIONS

RECOMMENDED SYSTEM REQUIREMENTS

- 3 Ghz Dual/Quad Core, Core i5 recommended
- DVD ROM
- 3 Available USB 2.0 ports
- Windows 7 Professional® 32- or 64-bit
- 4+ GB RAM
- 100/1000 Network Interface Card

Server requirements vary based on production volume demands and number of client and RIP connections.

mColor WORKFLOW PC CLIENT

MINIMUM SYSTEM REQUIREMENTS

- 2 Ghz Dual Core or higher processor
- DVD ROM
- Clients are available for Windows XP Professional®, Windows 2003 Server, Windows Vista Business Professional, Windows 7 Professional 32- and 64-bit. "Home" versions of the operating system are not supported
- 2 GB RAM
- 100/1000 Network Interface Card

mColor WORKFLOW Mac® OS X CLIENT

MINIMUM SYSTEM REQUIREMENTS

- OS X 10.7, OS X 10.8
- 2 GB RAM or more

Recommendations do not include the requirements for other workstation software.

WHY CHOOSE NEOPOST?

Neopost SA is a world leader in mailing and logistics solutions. Our innovative solutions bring simplicity and efficiency to your mailing process to make your business run better. Neopost brilliantbasics benefits provide excellence in all our offers, from products to support and services. They bring you the best in operational efficiency, mail quality and security, budget optimization and online management. Whether for advice or support, you enjoy our commitment to supply first-class service – on the phone, on site, or online. Benefit from immediate response times and remote diagnosis at our call centers and fast dispatch of service engineers when needed.

neopost  **USA** 1-888-NEOPOST (636-7678)
www.neopostusa.com

Neopost® and the Neopost logo are registered trademarks of Neopost S.A. All other company and product names may be trademarks and are the property of their respective owners.
All information in this document, including descriptions of features, functions, performance and specifications is subject to change without written notice at any time.



EAGLE Registrations Inc.
SERVICE • INTEGRITY • VALUE
ISO 14001 and OHSAS 18001
Registered by EAGLE Registrations Inc.