

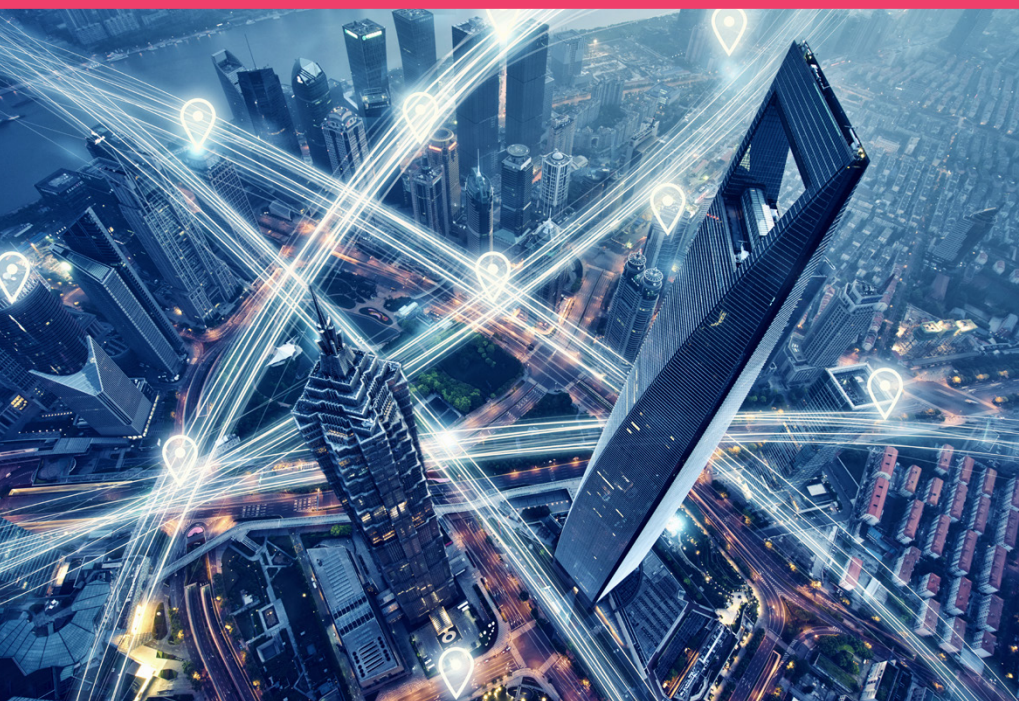
Comprehensive contact data quality

Whether your focus is direct marketing, order fulfillment or billing, accurate contact data is essential. Quickly integrating that data into your communication systems is critical to delivering efficient and accurate communications. Built for easy integration and maintenance, Quadient Architect is a comprehensive contact data quality solution that will meet the unique needs of your business.

- Validate contact data as it's entered across digital channels
- Correct existing records for compliance and customer experience
- Maintain an up-to-date database as people and businesses move
- Streamline mail preparation and submission processes

“The product has worked well for us. Any questions or any technical issues we’ve had have been handled well by Quadient. The support staff are well trained and are able to solve problems. Also, the sales people that we’ve dealt with have gone out of their way to make the program work for us.”

—Laura Beattie, Marketing Director, DMS Marketing



Experience
Over 6,000
customers worldwide



**Backed by
the experts**
Ranked a Leader by
Gartner & Forrester



**Future-proof
technology**
Fastest release rates
in the industry



Proven results
95% customer
satisfaction rate



“We use address correction, Presort, NCOA, Palletization, and Mail.dat. Submissions to postal agencies have been very smooth and accurate. The postal service has been very happy with us since we switched to Architect. We haven’t received less than 100% accuracy on a mailing this year.”

—IT Director, Medium Enterprise Media & Entertainment Company

“We use Architect to support Cass™, DPV®, and international address cleansing. I would recommend Architect. It’s a solid, reliable product that delivers on expectations.”

—IT Manager, Large Enterprise Financial Services Company



Streamline document processing

Improve deliverability and offer new value-added services to your clients by cleaning, validating and updating addresses at the source. Integrate mailing preparation into existing systems or build an automated processing environment. Streamline document processing with address correction and presorting to print validated addresses and postal barcodes on custom documents, such as invoices and statements.



“Architect has been integrated into our custom data processing system. It’s currently used for it’s NCOA, CASS, and Presort functionalities. The efficiency we’ve gained in our processing time is fantastic.”

—Customer Support Representative, Medium Enterprise Industrial Manufacturing Company



Scale as you grow

Extend functionality as your business needs grow. Additional data enrichment options provide a more complete customer view. Plan better, more accurate direct mail campaigns and offer additional services to your clients. Quadient data sets are available in the US, UK, Canada and Australia.

EasyTrack

Monitor the progress of an entire mailing or locate a specific mail piece for a concerned client.

Firm Bundles

Bundle mail pieces addressed to the same firm to incur a single postage charge.

Geocode

Append high-precision geocodes to each address record. Enable ‘find my nearest’ location based on the ZIP Code™ entered by website visitors.

Mail Optimization

Options include NCOA Link®, Move Update process, Walk Sequence and more.

Mail.dat®

Generates Mail.dat files that may be submitted to USPS® through PostalOne!® as a replacement for the traditional hardcopy documentation for a mailing.

Mixed Weights

Combine otherwise identical pieces of different weight and thickness into one mailing. Available for First-Class Mail®, Standard Mail® and Package Services.

Package Services

Extend presort capabilities with Bound Printed Matter, Media and Library Mail classifications.

Palletization

Organize large numbers of tray-based, sack-based and package-based pallet presorts for Periodical and Standard Mail.

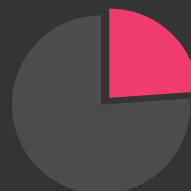
RDI™ service

Use RDI™ to determine if addresses are residential or not, so that you choose the most cost effective shipping option.

Monthly Updates

Customers who need to receive the very latest USPS® address dataset may upgrade from the standard bimonthly cycle to monthly updates.

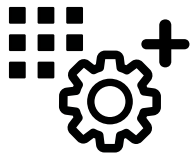
According to USPS®:



23.6%
of all mail is
addressed
incorrectly

The quality
of stored US
addresses decays
at a rate of
17%
per year

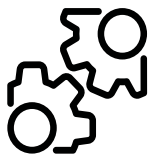
Undeliverable mail
costs business
mailers more than
\$4 BILLION
annually



Additional Data Services

Supplement your contact records with additional data. Append contact details like head of household, email or phone numbers and identify moves not reported to USPS® - all within your existing system.

Flag records that match entries in Do Not Mail, deceased, and correctional facility lists. Improve ROI by identifying people that are unwilling or unable to respond before the mailing is sent.



Flexible implementation options

Architect can be configured to validate contact data using our secure cloud-based service — or a self-hosted installation. Both options use a secure connection to process data without manual intervention.

www.quadient.com

quadient
A NEOPOST COMPANY

To learn more about Quadient Solutions contact:

Neopost USA
1.888.NEOPOST (636-7678)
neomkt@neopost.com

© Quadient | www.quadient.com | Australia, Belgium, Brazil, Canada, China, Czech Republic, France, Germany, Hong Kong, Hungary, India, Italy, Japan, Mexico, Netherlands, Poland, Singapore, South Korea, Spain, Switzerland, Taiwan, United Kingdom, United States.